



Government of India
Ministry of Earth Sciences
India Meteorological Department



Press Release

Date: 02nd July, 2025

Time of Issue: 1330 hours IST

Subject: Active monsoon conditions likely to continue over many parts of Northwest, Central and East India during next 6-7 days with Extremely heavy rainfall (≥ 20 cm) very likely at isolated places over East Rajasthan and ghat areas of Madhya Maharashtra today, the 2nd July, 2025.

Realised weather during past 24 hours till 0830 hours IST of today, the 02nd July, 2025 (Annexure II):

- ❖ **Heavy to very heavy rainfall with extremely heavy falls** has been recorded at isolated places over East Rajasthan.
- ❖ **Heavy to very heavy rainfall** has been recorded at isolated places over Madhya Pradesh, Konkan, Madhya Maharashtra, Gujarat Region, Odisha, South Interior Karnataka; **Heavy rainfall** at isolated places over East Uttar Pradesh, Vidarbha, Chhattisgarh, Coastal Andhra Pradesh & Yanam, Telangana, Kerala, Arunachal Pradesh, Assam & Meghalaya.
- ❖ **Thunderstorm accompanied with Squally/Gusty winds with speed 40-60 kmph** at isolated places over Marathwada, Madhya Pradesh, East Uttar Pradesh, Saurashtra & Kutch, Madhya Maharashtra, Konkan & Goa, Bihar, Andaman & Nicobar Islands, Tamil Nadu, Kerala, Rayalaseema, Telangana, Coastal Andhra Pradesh, Interior Karnataka.

For more details of realised weather, kindly refer [Annexure I](#),

i. Weather Systems, Forecast and Warnings (refer to Annexure II & III):

- ❖ Monsoon trough is south of its normal position at mean sea level.
- ❖ A cyclonic circulation lies over south Jharkhand & neighbourhood and extends upto middle tropospheric levels tilting southwards with height.
- ❖ A trough runs from southeast Rajasthan to northwest Bay of Bengal across central Madhya Pradesh, north Chhattisgarh, the cyclonic circulation over south Jharkhand & neighbourhood, Gangetic West Bengal in lower & middle tropospheric levels tilting southwards with height.
- ❖ A cyclonic circulation lay over northeast Assam in lower tropospheric levels.

Under the influence of these systems, the following weather is likely:

East & Central India:

- ✓ Isolated **heavy rainfall** over Madhya Pradesh, Vidarbha, Chhattisgarh, Odisha during 02nd-08th July; Bihar, West Bengal & Sikkim, Jharkhand during 02nd-06th July with **very heavy rainfall** over Madhya Pradesh during 02nd-06th; Chhattisgarh, Odisha on 02nd, 05th & 06th July.
- ✓ Light/moderate rainfall at most/many places accompanied with **thunderstorm, lightning** likely over the region during next 7 days.

Northwest India:

- ✓ **Extremely heavy rainfall (≥ 20 cm)** very likely at isolated places over East Rajasthan on 02nd July.
- ✓ Isolated **heavy rainfall** likely over Himachal Pradesh, Uttarakhand, East Rajasthan, Haryana & Chandigarh during 02nd-08th July; East Uttar Pradesh during 02nd-06th July; Punjab, West Uttar Pradesh during 05th-08th July; West Rajasthan during 02nd-04th July; Jammu on 02nd and during 05th-08th July with **very heavy rainfall over Himachal Pradesh on during 05th-07th; Punjab, Haryana on 06th & 07th and East Rajasthan during 02nd-04th July.**
- ✓ Light/moderate rainfall at most/many places accompanied with **thunderstorm, lightning & gusty winds speed reaching 30-40 kmph** likely over Northwest India during next 7 days.

West India:

- ✓ **Extremely heavy rainfall (≥ 20 cm)** very likely at isolated places over Ghat areas of Madhya Maharashtra on 02nd July.
- ✓ **Heavy to very heavy rainfall** at isolated places likely over Konkan & Goa, Ghat areas of Madhya Maharashtra, Gujarat region and **heavy rainfall** over Saurashtra & Kutch during next 7 days.

Northeast India:

- ✓ Light/moderate rainfall at most places accompanied with **thunderstorm, lightning and isolated heavy to very heavy rainfall** likely to continue over Northeast India during next 7 days with isolated extremely heavy falls over Meghalaya on 05th & 06th July.

South Peninsular India:

- ✓ Isolated **heavy rainfall** likely over Coastal Andhra Pradesh; Telangana on 02nd July; Kerala & Mahe during 02nd-05th July, Karnataka during 02nd-08th July with **very heavy rainfall** over Kerala and Karnataka on 02nd July.
- ✓ **Strong surface winds** (speed reaching 40-50 kmph) very likely over South Peninsular India during next 7 days.
- ✓ Light/moderate rainfall at many/some places over Kerala & Mahe, Lakshadweep, Karnataka, Telangana; isolated to scattered rainfall accompanied with isolated **thunderstorm, lightning** over Coastal Andhra Pradesh & Yanam, Tamil Nadu, Puducherry & Karaikal and Rayalaseema during next 7 days.

Fishermen Warnings:

Fishermen are advised to avoid venturing into the following from 02nd July to 07th July 2025 to the following Areas:
Arabian Sea:

- Along and off Gujarat, Konkan, Goa coasts; along and off the Somalia coast and adjoining sea areas, Oman and adjoining Yemen coast & adjoining sea areas; over central & adjoining north, south Arabian Sea during day 1 to day 5 (02nd to 7th July); some parts of northwest Arabian Sea for day 1 (02nd July), southern parts of north Arabian Sea for day 5 (6th July).

Bay of Bengal:

- many parts of central Bay of Bengal; Along and off north Andhra Pradesh coast for day 1 to day 5 (02nd to 7th July); along and off Odisha, West Bengal coasts for day 1 (2nd July); few northern parts of southwest Bay of Bengal and Gulf of Mannar for day 1 & day 2 (02nd & 03rd July); few northern parts of southeast Bay of Bengal for day 4 (05th July); most parts of north Bay of Bengal for day 1 (02nd July).
- Total suspension of fishing operations is suggested over above mentioned areas and dates.

ii. Weather conditions and forecast over Delhi/NCR during 02nd to 05th July, 2025 (Annexure IV)

For more details, kindly refer National Weather Bulletin:

https://mausam.imd.gov.in/responsive/all_india_forecast_bulletin.php

For District wise warnings refer: <https://mausam.imd.gov.in/responsive/districtWiseWarningGIS.php>

Rainfall recorded (in cm) during past 24 hours till 0830 hours IST of today, the 02nd July:

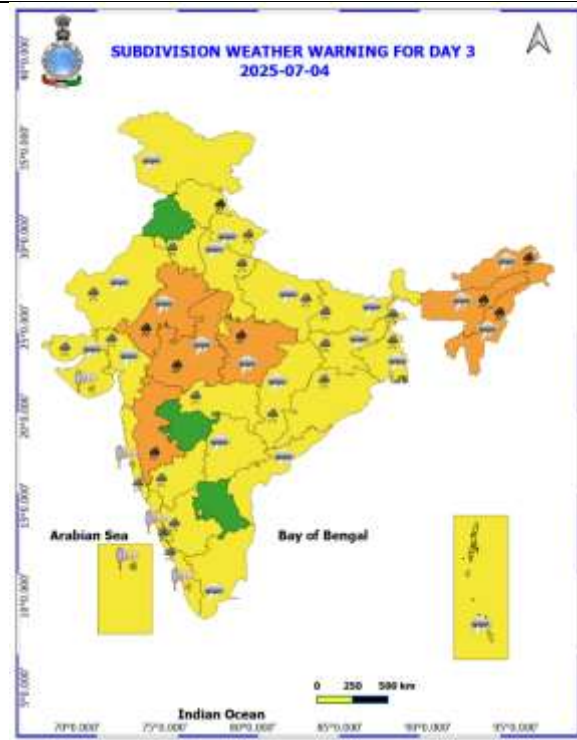
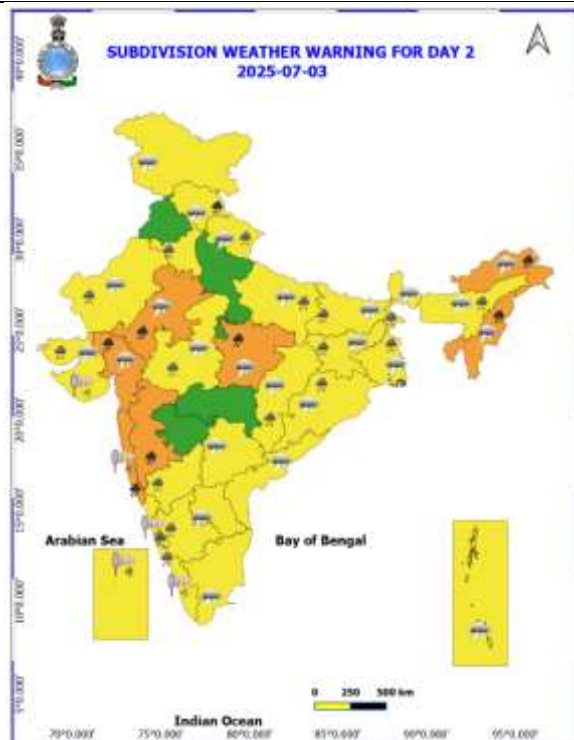
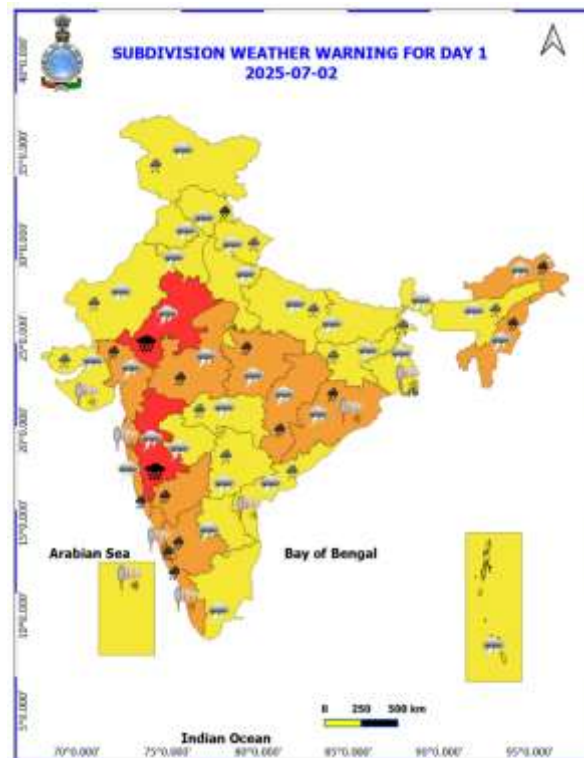
- ❖ **East Rajasthan:** Khanpur (dist Jhalawar) 20; Asnawar SR (dist Jhalawar), Geola SR (dist Ajmer) 18 Each; Malpura (dist Tonk) 15; Hurda SR (dist Bhilwara), Ramganjmandi SR (dist Kota) 14 Each; Sangod (dist Kota), Bhainsroadgarh SR (dist Chittorgarh), Kekri SR (dist Ajmer) 13 Each; Aklera (dist Jhalawar), Vijaynagar SR (dist Ajmer), Bijoliya SR (dist Bhilwara), Bhinay SR (dist Ajmer) 11 Each; Kota-aero (dist Kota), Masuda SR (dist Ajmer), Jhalarapatan SR (dist Jhalawar) 10 Each; Mandrayal SR (dist Karauli), Ladpura SR (dist Kota), Nasirabad (dist Ajmer) 9 Each; Bakani SR (dist Jhalawar), Sarwar (dist Ajmer) 8 Each; Manohar Thana (dist Jhalawar), Chipabarod SR (dist Baran), Deoli (dist Tonk) 7 Each;
- ❖ **East Madhya Pradesh:** Chhapara (dist Seoni) 18; Gadarwara (dist Narsinghpur), Baihar (dist Balaghat) 7 Each;
- ❖ **Konkan & Goa:** Jawhar (dist Palghar) 17; Mokheda - Fmo (dist Palghar) 13; Sanguem (dist South Goa) 10; Vikramgad (dist Palghar), Sawantwadi (dist Sindhudurg), Lanja (dist Ratnagiri) 7 Each;
- ❖ **West Madhya Pradesh:** Rajgarh (dist Rajgarh) 15; Guna-aws (dist Guna) 12; Biaora (dist Rajgarh) 11; Bhanpura (dist Mandsaur) 10; Khilchipur (dist Rajgarh), Bhopal Arera Hills (dist Bhopal), Pipariya (dist Narmadapuram) 9 Each; Bairagarh Airport (dist Bhopal) 8; Vijaypur (adp) (dist Sheopur), Aron (dist Guna), Zirapur (dist Rajgarh), Karhal (dist Sheopur), Kolar (dist Bhopal) 7 Each;
- ❖ **Odisha:** Kotpad (dist Koraput) 15; Jeypore (dist Koraput) 14; Similiguda (dist Koraput) 12; Koraput (dist Koraput) 11; Bhuban (dist Dhenkanal), Borigumma (dist Koraput) 9 Each; Cuttack (dist Cuttack), Rairangpur (dist Mayurbhanj) 8 Each; Dabugan (dist Nawarangpur), Kosagumda (dist Nawarangpur), Lahunipara (dist Sundargarh), Gurundia (dist Sundargarh), Nandahandi (dist Nawarangpur) 7 Each;
- ❖ **Gujarat Region:** Dolvan (dist Tapi) 12; Khanvel (dist Dadara & Nagar Haveli) 8; Kaprada (dist Valsad) 7;
- ❖ **South Interior Karnataka:** Agumbe Emo (dist Shivamogga) 12;
- ❖ **Chhattisgarh:** Raigarh (dist Raigarh) 11; Dhabhara (dist Sakti), Nangur (dist Bastar) 8 Each; Jagdalpur (dist Bastar), Tokapal (dist Bastar), Bakavand (dist Bastar), Bhairamgarh (dist Bijapur), Akaltara (dist Janjgir), Chandrapur (dist Sakti), Mukdega (dist Raigarh), Karpawand (dist Bastar) 7 Each;
- ❖ **Coastal Andhra Pradesh & Yanam:** Velairpad (dist Eluru) 10; Kunavaram (dist Alluri Sitharamaraju) 9; Kukunoor (dist Eluru) 8;
- ❖ **Madhya Maharashtra:** Gaganbawada (dist Kolhapur) 10; Trimbakshwar (dist Nashik) 9; Harsul - Fmo (dist Nashik) 8; Mahabaleshwar (dist Satara), Radhanagari (dist Kolhapur) 7 Each;
- ❖ **Coastal Karnataka:** Kadra (dist Uttara Kannada) 10; Joida (dist Uttara Kannada) 8; Gersoppa (dist Uttara Kannada) 7;
- ❖ **Telangana:** Palawancha (dist B. Kothagudem), Garla (dist Mahabubabad) 9 Each; Bhadrachalam (dist B. Kothagudem), Burgampadu (dist B. Kothagudem) 8 Each;
- ❖ **Arunachal Pradesh:** Naharlagun (dist Papumpara) 9;
- ❖ **Assam & Meghalaya:** Gharmura (dist Hailakandi), N.Lakhimpur/Lilabari (dist Lakhimpur) 9 Each; Mawsynram (dist East Khasi Hills), Cherrapunji (dist East Khasi Hills) 7 Each;
- ❖ **Kerala & Mahe:** Ayyankunnu AWS (dist Cannur) 7;
- ❖ **Vidarbha:** Bhamragad (dist Gadchiroli) 7;
- ❖ **East Uttar Pradesh:** Gyanpur (dist Bhadohi) 7.

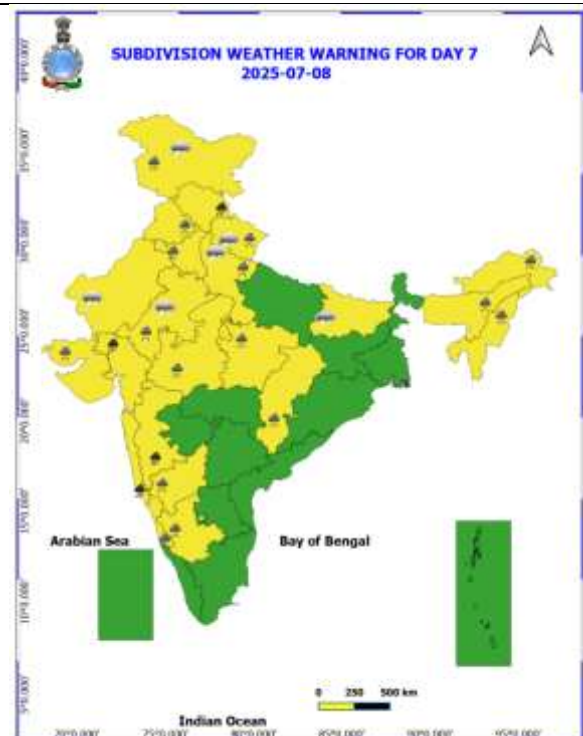
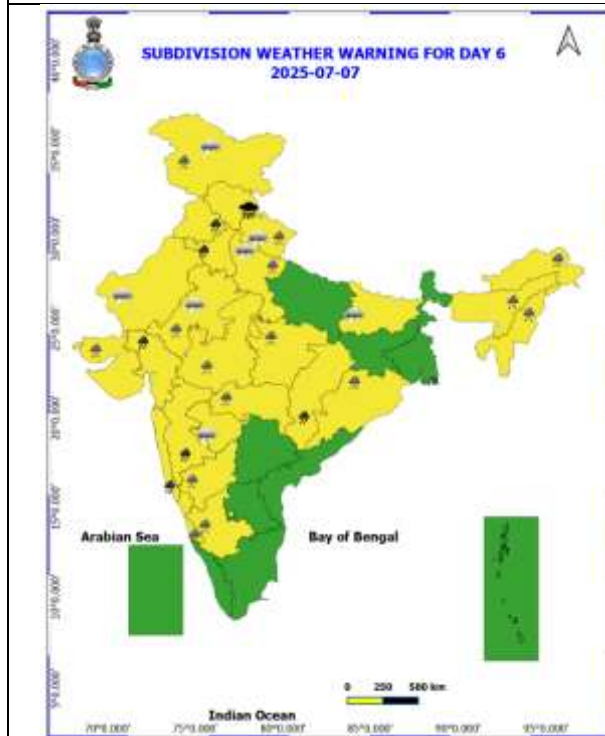
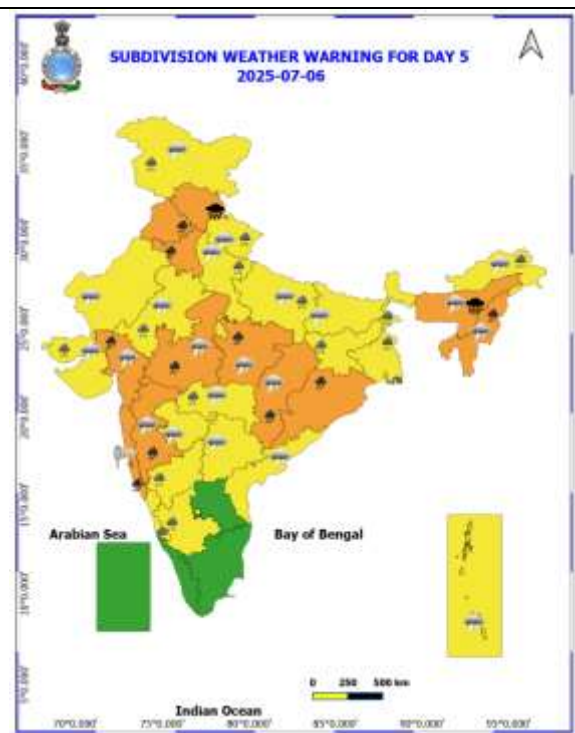
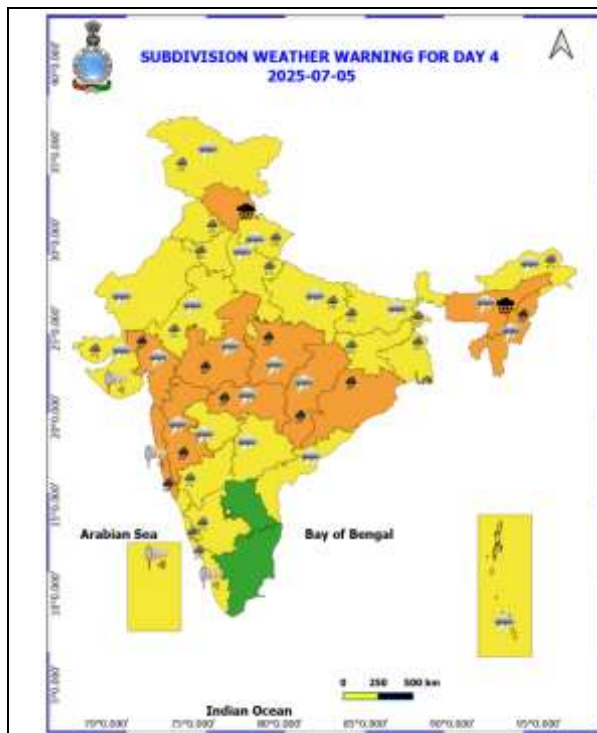
Realised Gusty Winds (kmph) During Past 24hours ending at 0830 hrs IST of today the 02nd July:

- ❖ **Marathwada - Chh.** Sambhaji Nagar 63, Ambejogai (Beed) 59, Jalna 50;
- ❖ **East Uttar Pradesh:** Fatehpur & Balrampur 54 Each, Fatehpur 46, Lucknow (Integral_University) 41;
- ❖ **Madhya Maharashtra:** Mahabaleshwar (Satara) - 52, Vilholi (Nashik) - 50, Kurvande (Pune) and Karjat (Raigad) 48;
- ❖ **Saurashtra & Kutch:** Dhari 50;
- ❖ **Andaman & Nicobar Islands:** Sri Vijayapuram 46;
- ❖ **West Madhya Pradesh:** Ujjain 44;
- ❖ **East Madhya Pradesh:** Sagar 43;
- ❖ **Konkan:** Santacruz 43, Palghar 41;
- ❖ **Bihar:** Buxar, Dumaraon 41; East Champaran, Sukhet 39; Aurangabad 37; Banka, Saraiya, IIT Patna 35; Patna, Agwanpur, Sheikhpura 33; Bhojpur, Madhepura, Muzaffarpur, Rajgir, Manjhi 31; Pusa 30

Table-1								
7 Days Rainfall Forecast								
S.No.	Subdivision	2- Jul	3- Jul	4- Jul	5- Jul	6- Jul	7- Jul	8- Jul
		Day 1	Day 2	Day 3	Day 4	Day 5	Day 6	Day 7
1	ANDAMAN & NICOBAR ISLANDS	FWS	FWS	WS	WS	WS	WS	WS
2	ARUNACHAL PRADESH	WS	WS	FWS	FWS	SCT	SCT	SCT
3	ASSAM & MEHGHALAYA	FWS	WS	WS	WS	WS	FWS	FWS
4	NAGALAND, MANIPUR, MIZORAM AND TRIPURA	FWS	FWS	FWS	FWS	FWS	FWS	FWS
5	SUB HIMALAYAN WEST BENGAL & SIKKIM	WS	WS	WS	WS	WS	FWS	FWS
6	GANGETIC WEST BENGAL	WS	WS	WS	WS	WS	FWS	FWS
7	ODISHA	WS	FWS	FWS	FWS	FWS	FWS	SCT
8	JHARKHAND	WS	WS	WS	WS	WS	FWS	FWS
9	BIHAR	FWS	FWS	FWS	FWS	SCT	SCT	SCT
10	EAST UTTAR PRADESH	SCT	FWS	FWS	SCT	SCT	SCT	FWS
11	WEST UTTAR PRADESH	SCT	SCT	FWS	FWS	FWS	SCT	SCT
12	UTTARAKHAND	FWS	FWS	FWS	FWS	FWS	FWS	FWS
13	HARYANA, CHANDIGARH & DELHI	ISOL	SCT	FWS	FWS	WS	WS	FWS
14	PUNJAB	ISOL	SCT	SCT	FWS	WS	WS	WS
15	HIMACHAL PRADESH	FWS	WS	FWS	FWS	WS	WS	WS
16	JAMMU AND KASHMIR AND LADAKH	SCT	SCT	SCT	SCT	FWS	FWS	FWS
17	WEST RAJASTHAN	SCT	SCT	SCT	SCT	ISOL	ISOL	SCT
18	EAST RAJASTHAN	WS	FWS	FWS	FWS	FWS	FWS	FWS
19	WEST MADHYA PRADESH	WS	WS	WS	WS	WS	WS	WS
20	EAST MADHYA PRADESH	WS	WS	WS	WS	WS	WS	WS
21	GUJRAT REGION	WS	WS	WS	WS	WS	WS	WS
22	SAURASHTRA & KUTCH	WS	WS	WS	WS	WS	WS	WS
23	KONKAN & GOA	WS	WS	WS	WS	WS	WS	WS
24	MADHYA MAHARASHTRA	FWS	FWS	SCT	SCT	FWS	FWS	SCT
25	MARATHWADA	FWS	SCT	ISOL	SCT	FWS	FWS	SCT
26	VIDARBHA	FWS	FWS	WS	WS	WS	WS	FWS
27	CHHATTISGARH	WS	WS	WS	WS	WS	WS	WS
28	COASTAL ANDHRA PRADESH	FWS	SCT	SCT	SCT	SCT	ISOL	ISOL
29	TELANGANA	FWS	SCT	SCT	SCT	FWS	FWS	FWS
30	RAYALASEEMA	ISOL	ISOL	ISOL	ISOL	ISOL	ISOL	ISOL
31	TAMILNADU & PUDUCHERRY	ISOL	ISOL	ISOL	ISOL	ISOL	ISOL	ISOL
32	COSTAL KARNATAKA	WS	WS	WS	WS	WS	WS	WS
33	NORTH INTERIOR KARNATAKA	WS	WS	WS	FWS	FWS	FWS	FWS
34	SOUTH INTERIOR KARNATAKA	FWS	FWS	FWS	SCT	SCT	SCT	SCT
35	KERALA AND MAHE	WS	WS	FWS	FWS	FWS	FWS	FWS
36	LAKSHADWEEP	WS	FWS	FWS	FWS	SCT	SCT	SCT

- As the lead period increases forecast accuracy decreases.





- Action may be taken based on ORANGE AND REDCOLOUR warnings.
- Vulnerable regions likely urban and hilly areas action may be initiated for heavy rainfall warning.
- As the lead period increases forecast accuracy decreases.

Detailed districtwise Multi Hazard weather warning for next five days available at
<https://mausam.imd.gov.in/responsive/districtWiseWarningGIS.php>

Weather forecast over Delhi/NCR during 02nd to 05th July 2025**Past Weather:**

There has been rise in the minimum temperature up to 2 - 4°C and rise in maximum temperature up to 2 - 5°C over Delhi/NCR during the past 24 hours. The maximum and minimum temperatures over Delhi were around 33 to 35 °C and 26 to 27°C, respectively. The minimum temperature was near normal and maximum temperature was below normal up to 2 - 5°C. Partly cloudy sky conditions with predominant surface wind from the east/southeast direction with wind speeds up to 14 kmph prevailed during the past 24 hours. Partly cloudy sky conditions with wind speed less than 14 kmph from the northeast direction prevailed over the region in the forenoon today.

Weather Forecast:

02.07.2025: Partly cloudy sky. Very light to light rain accompanied with thunderstorm/lightning. The maximum temperatures over Delhi are likely to be in the range of 35 to 37°C. The maximum temperature will be below normal upto 1 to 2°C. The predominant surface wind will likely be from the southeast direction with a wind speed of less than 15 kmph in the afternoon. The wind speed will gradually decrease becoming 08-10 kmph from the southeast direction during evening and night.

03.07.2025: Partly cloudy sky. Very light to light rain accompanied with thunderstorm/lightning. The maximum and minimum temperatures over Delhi are likely to be in the range of 36 to 38°C and 26 to 28°C respectively. The minimum temperature will be below normal up to 1 - 2°C and the maximum temperature will be below normal up to 1 to 2°C. The predominant surface wind will likely be from the southeast direction with a wind speed of less than 15 kmph during the morning hours. The wind speed will gradually decrease becoming 08-10 kmph from the southeast direction in the afternoon. It will decrease becoming less than 08 kmph from the southwest direction during evening and night.

04.07.2025: Partly cloudy sky. Very light to light rain accompanied with thunderstorm/lightning. The maximum and minimum temperatures over Delhi are likely to be in the range of 36 to 38°C and 26 to 28°C respectively. The minimum temperature will be below normal up to 1 to 2°C and the maximum temperature will be below normal up to 1 to 2°C. The predominant surface wind will likely be from the east direction with a wind speed of less than 10 kmph during the morning hours. The wind speed will gradually decrease becoming less than 08 kmph from the southeast direction in the afternoon. It will increase to less than 10 kmph from the southwest direction during the evening and night.

05.07.2025: Partly cloudy sky. Very light to light rain accompanied with thunderstorm/lightning. The maximum and minimum temperatures over Delhi are likely to be in the range of 35 to 37°C and 24 to 26°C respectively. The minimum temperature will be below normal up to 1 to 3°C and the maximum temperature will be below normal up to 1 to 2°C. The predominant surface wind will likely be from the southwest direction with a wind speed of less than 20 kmph during the morning hours. The wind speed will gradually decrease becoming less than 10 kmph from the southwest direction in the afternoon. It will increase to less than 12 kmph from the southwest direction during the evening and night.

Impact expected and Action Suggested due to thunderstorm with lightning/gusty winds:

- Be cautious and take precautionary measures, though there is the likelihood of thunderstorm/lightning.
- Breaking of tree branches, uprooting of large avenue trees, Large dead limbs blown from trees, Damage to standing crops, Minor to major damage to power and communication lines due to breaking of branches, Partial damage to vulnerable structures due to strong winds, Loose objects may fly.
- People are advised to keep a watch on the weather for worsening conditions and be ready to move to safer places accordingly, stay indoors, close windows & doors and avoid travel if possible, take safe shelters; do not take shelter under trees, do not lie on concrete floors and do not lean against concrete walls, unplug electrical/ electronic appliances, immediately get out of water bodies, keep away from all the objects that conduct electricity.

Impact & Action Suggested due to very heavy/extremely heavy rainfall:

- ✓ **Extremely heavy rainfall (≥ 20 cm)** very likely at isolated places over East Rajasthan, ghat areas of Madhya Maharashtra on 02nd July; Meghalaya on 05th & 06th July.
- ✓ **very heavy rainfall over** Kerala and Karnataka on 02nd; Himachal Pradesh on during 05th-07th; Punjab, Haryana on 06th & 07th and East Rajasthan, Arunachal Pradesh during 02nd-04th July; Madhya Pradesh, Konkan & Goa, ghat areas of Madhya Maharashtra, Gujarat Region, Nagaland, Manipur, Mizoram & Tripura during 02nd-06th; Assam & Meghalaya during 04th-06th; Chhattisgarh, Odisha on 02nd, 05th & 06th July.

Impact Expected

- Localized Flooding of roads, water logging in low lying areas and closure of underpasses mainly in urban areas of the above region.
- Occasional reduction in visibility due to heavy rainfall.
- Disruption of traffic in major cities due to water logging in roads leading to increased travel time.
- Minor damage to kutcha roads.
- Possibilities of damage to vulnerable structure.
- Localized Landslides/Mudslides/landslips/mudslips/landsinks/mudsinks.
- Damage to horticulture and standing crops in some areas due to inundation.
- It may lead to riverine flooding in some river catchments (for riverine flooding please visit Web page of CWC)

Action Suggested

- Check for traffic congestion on your route before leaving for your destination.
- Follow any traffic advisories that are issued in this regard.
- Avoid going to areas that face the water logging problems often.
- Avoid staying in vulnerable structure.

Agromet advisories for likely impact of Heavy / Heavy to Very Heavy / Extremely Heavy Rainfall

- In **Odisha**, ensure proper drainage from already sown rice nurseries, fields of maize and vegetables to prevent waterlogging. Cover rice and vegetable nurseries with plastic sheets to prevent the washing away of seeds. Provide strong wooden support for papaya and banana plants to avoid lodging due to strong winds. In **West Central Table Land Zone**, postpone sowing of pigeon pea and groundnut. Carry out re-sowing of maize in case of poor germination / no germination due to waterlogged condition. In **Keonjhar district**, postpone sowing of maize and green gram.
- In **Jharkhand**, make necessary arrangements to drain out excess water from already sown maize fields, rice and vegetable nurseries. Cover the vegetable nurseries with polythene sheets.
- In **West Madhya Pradesh**, make necessary arrangements to drain out excess water from vegetables and orchards to avoid waterlogging. In **Gird Zone of West Madhya Pradesh**, postpone sowing of pearl millet. In **East Madhya Pradesh**, keep the harvested produce of maize, green gram and black gram in safe places. Ensure proper drainage in already sown / transplanted fields.
- In **Chhattisgarh**, ensure proper drainage in rice nurseries, fields of maize, minor millets and vegetables. In **Bastar Plateau Zone**, postpone transplanting of paddy during heavy rainfall period.
- In **East Rajasthan**, harvest the matured vegetables such as okra and cucurbits and store them in safe place. Make arrangement for draining out excess water from the fields of groundnut and green gram.
- In **East Uttar Pradesh**, drain out excess water from late sown rice nurseries, groundnut, green gram, maize and vegetables.
- In **Konkan**, make arrangements to drain out excess water from rice nurseries, fields of finger millet, groundnut and orchards to prevent waterlogging. In **ghat areas of Madhya Maharashtra**, drain out excess water from rice nurseries, vegetables and orchards to prevent waterlogging.
- In **Gujarat**, make necessary arrangements to drain out excess water in rice nurseries, sugarcane fields, banana and mango plantations to prevent waterlogging. Provide support to sugarcane and banana to prevent lodging. In **Saurashtra & Kutch**, drain out excess rain water from vegetable nurseries and horticultural plantations. Undertake propping in sugarcanes with strong bamboo or tie the leaves together in a clump to protect against wind and heavy rain.
- In **Arunachal Pradesh**, ensure proper drainage in rice, soyabean, vegetable fields and orchards (kiwi, apple). Avoid fresh transplanting of rice in low-lying areas. Provide staking to vegetables. Provide strong support to banana plants using bamboo or wooden stakes to prevent lodging or stem breakage.
- In **Assam**, keep the harvested produce of sesame, foxtail millet, *Boro* rice, banana and citrus at safer places. Ensure proper drainage in *Sali* rice nursery, maize and sugarcane fields, arecanut and coconut plantations to prevent waterlogging.
- In **Meghalaya**, postpone nursery sowing of rice especially in valleys. Ensure proper drainage in the fields of maize, ginger, French bean, cowpea, vegetables and around rice nurseries to prevent waterlogging. Provide strong bamboo stakes or trellis support to cow pea, cucumber and bottle gourd to prevent vines from trailing on wet ground. Provide support to banana plant to prevent lodging.

- In **Himachal Pradesh**, provide drainage in the fields of vegetables and fruit orchards. Strengthen the support for creepers and tall vegetable crops (tomato, capsicum etc.). Harvest matured fruits of plum, pear, stone fruit and keep in safe places to minimize losses due to heavy rains. Drain out excess water from rice nurseries and maize fields.
- In **Uttarakhand**, ensure proper drainage facilities in pigeon pea, groundnut, maize, sugarcane, barnyard millet, finger millet, rice nurseries, kidney beans, black gram, green gram, vegetable and orchards. Harvest matured vegetables (pumpkin, tomato, okra, chilli, French bean etc.) and fruits and store in safe place. Tie the sugarcane plants together to avoid lodging.

Livestock / Fishery

- Keep the animals inside the shed during heavy rainfall and provide them balanced feed.
- Store feed and fodder in a safe place to prevent spoilage.
- Construct an outlet with proper netting around the ponds to drain out excess water, thereby preventing fish from escaping in case of overflow.

Agromet advisories for likely impact of Thunderstorm / Gusty Winds / Squally Winds

- Provide mechanical support to horticultural crops and staking or support to vegetables and young fruit plants / fruit-bearing plants to avoid lodging due to strong winds.

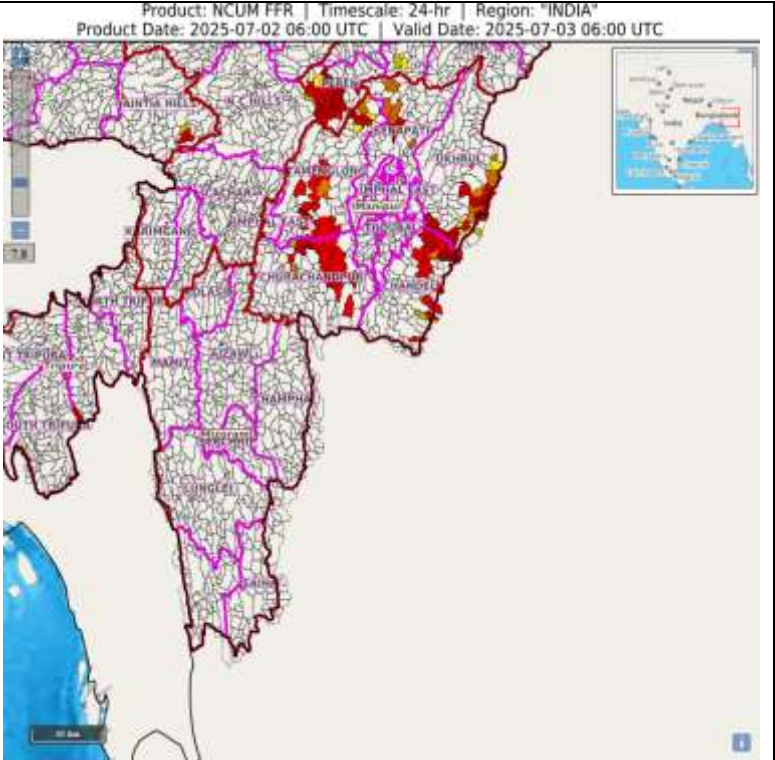
Flash flood guidance:

24 hours Outlook for the Flash Flood Risk (FFR) till 1130 IST of 03-07-2025 :

Low to Moderate flash flood risk likely over few watersheds & neighbourhoods of following Met Sub-divisions during next 24 hours.

Nagaland Mizoram Manipur Tripura (NMMT) – Manipur- Churachandpur, Chandel, Ukhral, Tamenglong, Senapati, Imphal West districts.

Surface runoff/ Inundation may occur at some fully saturated soils & low-lying areas over Area of Concern (AoC) as shown in map due to expected rainfall occurrence in next 24 hours.

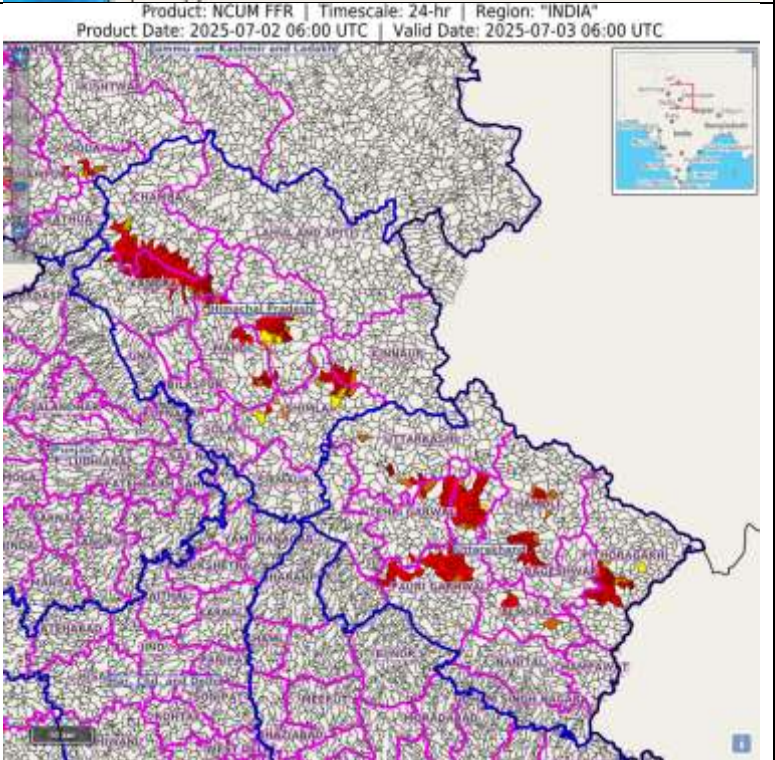


24 hours Outlook for the Flash Flood Risk (FFR) till 1130 IST of 03-07-2025 :

Low to Moderate flash flood risk likely over few watersheds & neighbourhoods of following Met Sub-divisions during next 24 hours.

Himchal Pradesh – Chamba, Kangra, Mandi, Kullu and Shimla districts. Uttarakhand – Tehri Garhwal, Pauri Garwahal, Uttarkashi, Bageshwar, Chamoli, Pithoragarh, Rudraprayag, Champawat, and Almora districts.

Surface runoff/ Inundation may occur at some fully saturated soils & low-lying areas over Area of Concern (AoC) as shown in map due to expected rainfall occurrence in next 24 hours.



Legends & abbreviations:

- ❖ **Heavy Rain:**64.5-115.5mm; **Very Heavy Rain:**115.6-204.4mm; **Extremely Heavy Rain:** >204.4mm.
- ❖ **Obsy:** Observatory; Automatic Weather Station; **ARG:** Automatic Rain Gauge; **dist:** District; **NH:** National Highway; **KVK:** Krishi Vigyan Kendra; **DVC:** Damodar Valley Corporation; **PTO:** Part Time Office, **Aero:** Aerodrome, **IAF:** Indian Air Force.
- ❖ **Region wise classification of meteorological Sub-Divisions:**
 - **Northwest India:** Western Himalayan Region (Jammu-Kashmir-Ladakh-Gilgit-Baltistan-Muzaffarabad, Himachal Pradesh and Uttarakhand); Punjab, Haryana-Chandigarh-Delhi; West Uttar Pradesh, East Uttar Pradesh, West Rajasthan and East Rajasthan.
 - **Central India:** West Madhya Pradesh, East Madhya Pradesh, Vidarbha and Chhattisgarh.
 - **East India:** Bihar, Jharkhand, Sub-Himalayan West Bengal & Sikkim; Gangetic West Bengal, Odisha and Andaman & Nicobar Islands.
 - **Northeast India:** Arunachal Pradesh, Assam & Meghalaya and Nagaland, Manipur, Mizoram & Tripura.
 - **West India:** Gujarat Region, Saurashtra & Kutch, Konkan & Goa, Madhya Maharashtra and Marathawada.
 - **South India:** Coastal Andhra Pradesh & Yanam, Telangana, Rayalaseema, Coastal Karnataka, North Interior Karnataka, South Interior Karnataka, Kerala & Mahe, Tamil Nadu, Puducherry & Karaikal and Lakshadweep.

LEGENDS

1. अंडमान और निकोबार द्वीपसमूह

2. अरुणाचल प्रदेश

3. असम और मेघालय

4. नागालैंड, मणिपुर, मिजोरम और त्रिपुरा

5. उप-हिमालयी पश्चिम बंगाल और सिक्किम

6. गंगीय पश्चिम बंगाल

7. ओडिशा

8. झारखंड

9. बिहार

10. पूर्वी उत्तर प्रदेश

11. पश्चिम उत्तर प्रदेश

12. उत्तराखंड

13. हरियाणा, चंडीगढ़ और दिल्ली

14. पंजाब

15. हिमाचल प्रदेश

16. जम्मू और कश्मीर और लद्दाख

17. पश्चिम राजस्थान

18. पूर्वी राजस्थान

19. पश्चिम मध्य प्रदेश

20. पूर्वी मध्य प्रदेश

21. गुजरात

22. सौराष्ट्र

23. कोंकण और गोवा

24. मध्य महाराष्ट्र

25. मराठवाड़ा

26. विदर्भ

27. छत्तीसगढ़

28. तटीय आंध्र प्रदेश और यनम

29. तेलंगाना

30. रायलसीमा

31. तमिलनाडु, पुडुचेरी और कराईकल

32. तटीय कर्नाटक

33. आंतरिक उत्तरी कर्नाटक

34. आंतरिक दक्षिणी कर्नाटक

35. केरल और माहे

36. लक्षद्वीप



1. Andaman & Nicobar Islands

2. Arunachal Pradesh

3. Assam & Meghalaya

4. Nagaland, Manipur, Mizoram & Tripura

5. Sub-Himalayan West Bengal & Sikkim

6. Gangetic West Bengal

7. Odisha

8. Jharkhand

9. Bihar

10. East Uttar Pradesh

11. West Uttar Pradesh

12. Uttarakhand

13. Haryana, Chandigarh & Delhi

14. Punjab

15. Himachal Pradesh

16. Jammu & Kashmir and Ladakh

17. West Rajasthan

18. East Rajasthan

19. West Madhya Pradesh

20. East Madhya Pradesh

21. Gujarat

22. Saurashtra

23. Konkan & Goa

24. Madhya Maharashtra

25. Marathwada

26. Vidarbha

27. Chhattisgarh

28. Coastal Andhra Pradesh & Yanam

29. Telangana

30. Rayalaseema

31. Tamilnadu, Puducherry & Karaikal

32. Coastal Karnataka

33. North Interior Karnataka

34. South Interior Karnataka

35. Kerala & Mahe

36. Lakshadweep

SPATIAL DISTRIBUTION (% of Stations reporting)

% Stations	Category	% Stations	Category
76-100	Widespread (WS/Most Places)	26-50	Scattered (SCT/A Few Places)
51-75	Fairly Widespread (FWS/Many Places)	1-25	Isolated (ISOL)



Fog



Heavy Snow



Cold Wave



Heavy Rain



Dust Storm



Cold Day



Very Heavy Rain



Heat Wave



Ground Frost



Extremely Heavy Rain



Warm Night



Thunder & Lightning



Hot Day



Hailstorm



Hot & Humid



Dust Raising Winds



Strong Surface Winds

COLOUR CODED WARNING

No Warning (No Action)

Watch (Be Aware)

Alert (Be Prepared To Take Action)

Warning (Take Action)

Probabilistic Forecast

Terms	Probability of Occurrence (%)
Unlikely	< 25
Likely	25 - 50
Very Likely	50 - 75
Most Likely	> 75

* Red colour warning does not mean "Red Alert", Red colour warning means "Take Action".

Forecast and Warning for any day is valid from 0830 hours IST of day till 0830 hours IST of next day.

For more details, kindly visit <https://mausam.imd.gov.in> or contact: 011-2434-4599

(Service to the Nation since 1875)

DEFINITION/CRITERIA

Rain/ Snow *

Heavy: 64.5 to 115.5 mm/cm *
Very Heavy: 115.6 to 204.4 mm/cm *
Extremely Heavy: > 204.4 mm/cm *

Heat Wave

When maximum temperature of a station reaches $\geq 40^{\circ}\text{C}$ for plains and $\geq 30^{\circ}\text{C}$ for hilly regions
(a) Based on Departure from normal

Heat Wave: Maximum Temperature Departure from normal 4.5°C to 6.4°C .

Severe Heat Wave: Maximum Temperature Departure from normal $\geq 6.5^{\circ}\text{C}$

(b). Based on Actual maximum temperature

Heat Wave: When actual maximum temperature $\geq 45^{\circ}\text{C}$.

Severe Heat Wave: When actual maximum temperature $\geq 47^{\circ}\text{C}$.

(c). Criteria for heat wave for coastal stations

When maximum temperature departure is $> 4.5^{\circ}\text{C}$ from normal. Heat Wave may be described provided maximum temperature $\geq 37^{\circ}\text{C}$.

Warm Night

When maximum temperature remains 40°C

Warm Night: When minimum temperature departure 4.5°C to 6.4°C .

Severe Warm Night: When minimum temperature departure $> 6.4^{\circ}\text{C}$.

Cold Wave

When minimum temperature of a station $\leq 10^{\circ}\text{C}$ for plains and $\leq 0^{\circ}\text{C}$ for hilly regions.

(a). Based on departure

Cold Wave: Minimum Temperature Departure from normal -4.5°C to -6.4°C .

Severe Cold Wave: Minimum Temperature Departure from normal $\leq -6.5^{\circ}\text{C}$

(b) Based on actual Minimum Temperature (for Plains only)

Cold Wave: When Minimum Temperature is $\leq 4.0^{\circ}\text{C}$

Severe Cold Wave: When Minimum Temperature is $\leq 2.0^{\circ}\text{C}$

(c) For Coastal Stations

When Minimum Temperature departure is $\leq -4.5^{\circ}\text{C}$ & actual Minimum Temperature is $\leq 15^{\circ}\text{C}$

Cold Day

When minimum temperature of a station $\leq 10^{\circ}\text{C}$ for plains and $\leq 0^{\circ}\text{C}$ for hilly regions

Based on departure

Cold Day: Maximum Temperature Departure from normal -4.5°C to -6.4°C .

Severe Cold Day: Maximum Temperature Departure from normal $\leq -6.5^{\circ}\text{C}$

Fog

Phenomenon of small droplets suspended in air and the horizontal visibility $< 1\text{km}$

Moderate Fog: When the visibility between 500-200 metres

Dense Fog: when the visibility between 50- 200 metres

Very Dense Fog: when the visibility < 50 metres

Thunderstorm

Sudden electrical discharges manifested by a flash of light (Lightning) and a sharp rumbling sound (thunder)

Dust/Sand Storm

An ensemble of particles of dust or sand energetically lifted to great heights by a strong and turbulent wind.

Frost

Ice deposits on ground

Air temperature $\leq 4^{\circ}\text{C}$ (over Plains)

Squall

A strong wind that rises suddenly, lasts for atleast 1 minute.

Moderate: Wind speed 52-61 kmph

Severe: Wind speed 62-67 kmph

Very Severe: Wind speed > 67 kmph

Sea State

Effect of various waves in the sea over specific area

Rough to very rough: Wind speed 41-62 kmph (22-33 knots) & Wave height 2.5-6 metre

High to very high: Wind speed 63-117 kmph (34-63 knots) & Wave height 6-14 metre

Phenomenal: Wind speed > 117 kmph (> 63 knots) & Wave height > 14 metre

Cyclone

Cyclonic Storm: Wind speed 62-87 kmph (34-47 knots)

Severe Cyclonic Storm: Wind speed 88-117 kmph (48-63 knots)

Very Severe Cyclonic Storm: Wind speed 118-165 kmph (64 - 89 knots)

Extremely Severe Cyclonic Storm: Wind speed 166-220 kmph (90 -119 knots)

Super Cyclone Storm: Wind speed > 220 kmph (> 119 knots)

* Red colour warning does not mean "Red Alert", Red colour warning means "Take Action".

Forecast and Warning for any day is valid from 0830 hours IST of day till 0830 hours IST of next day.

For more details, kindly visit <https://mausam.imd.gov.in> or contact: 011-2434-4599

(Service to the Nation since 1875)

Hot and Humid: When maximum temperatures remain 3°C above normal along with the above normal relative humidity.